

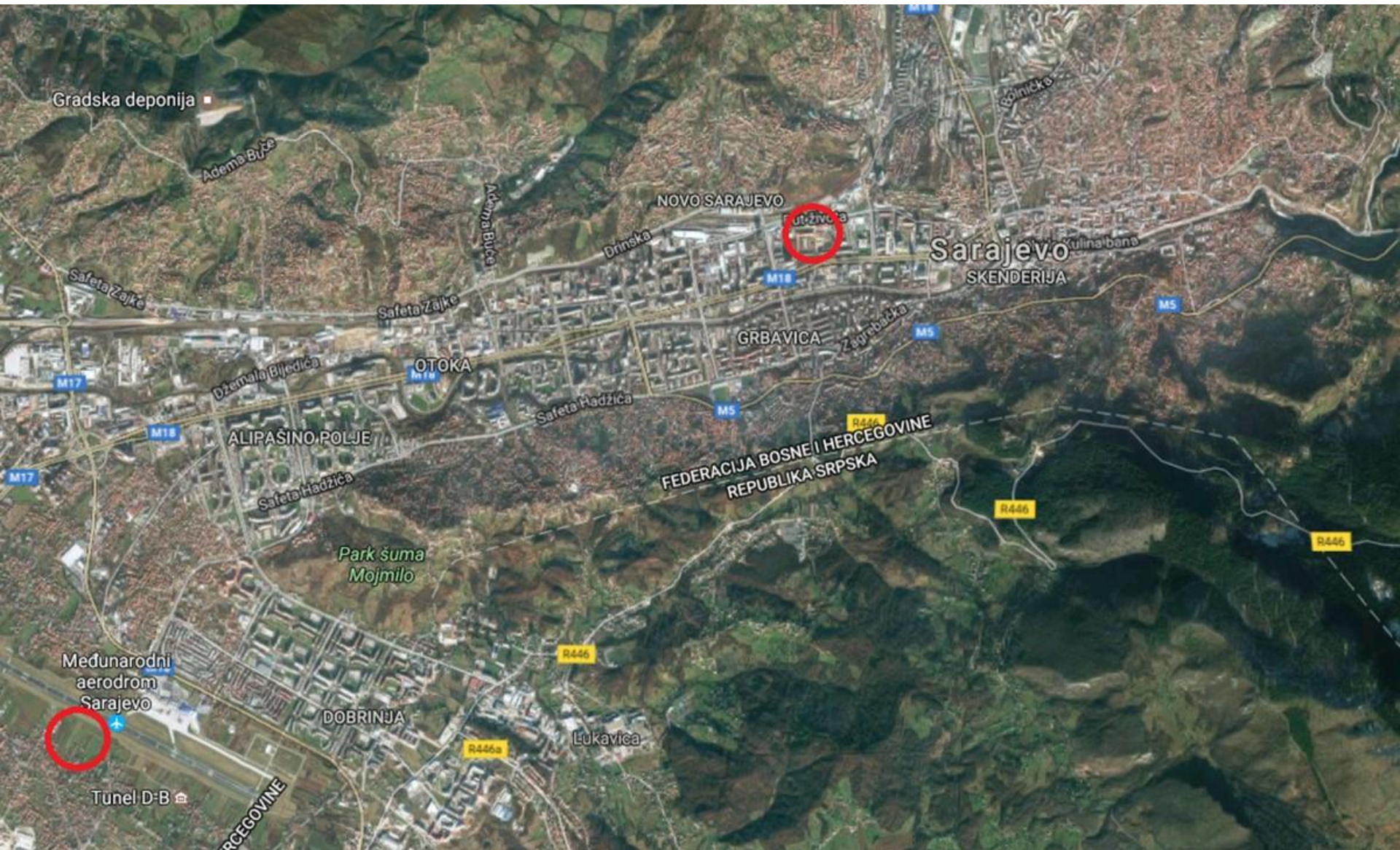


University of Sarajevo
Faculty of Agricultural and Food Sciences



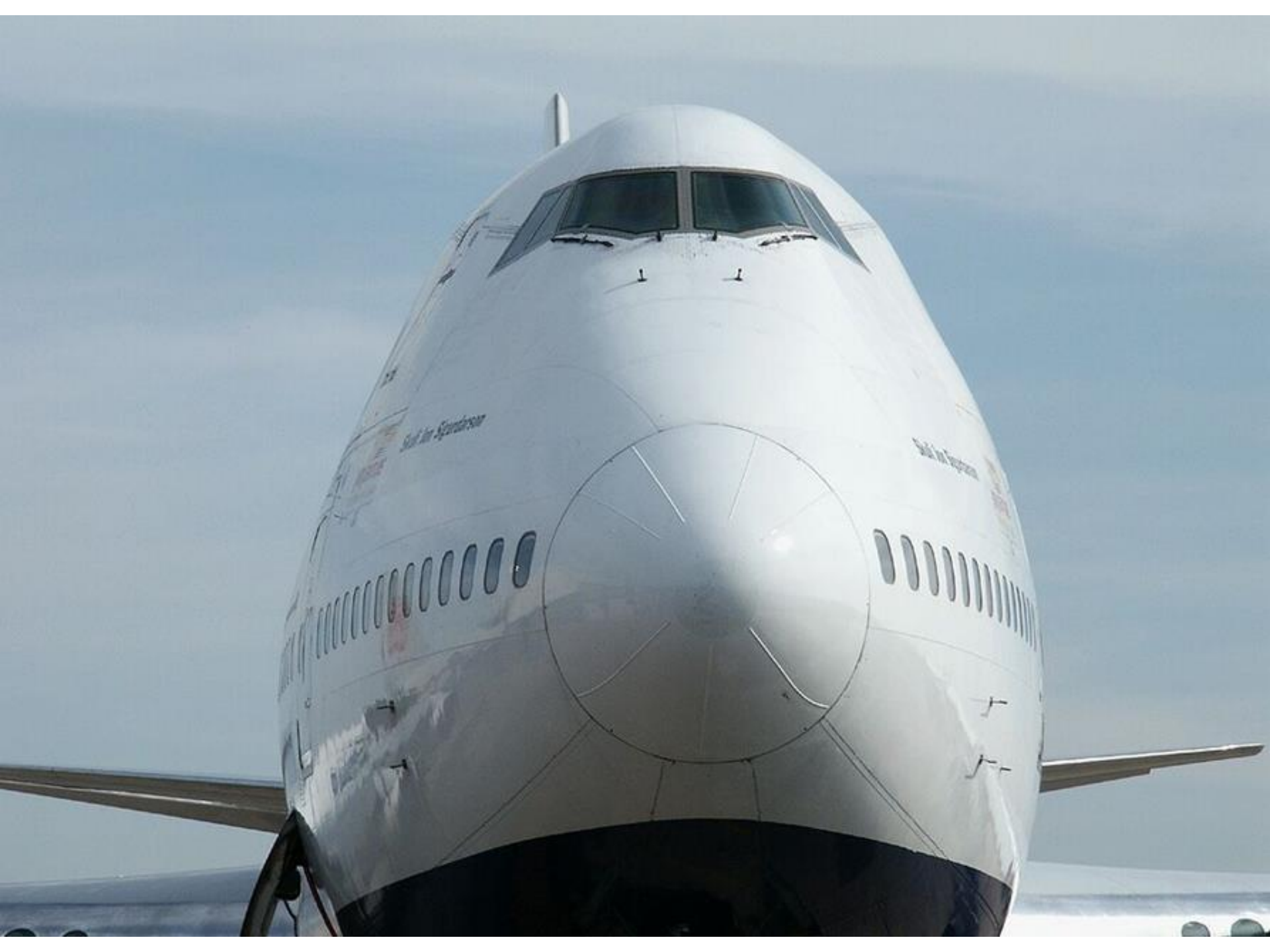
Experimental Station "Butmir"

Experimental Farm Network Meeting
at
CASEE Conference Warsaw 2017





Ebrinjska cesta



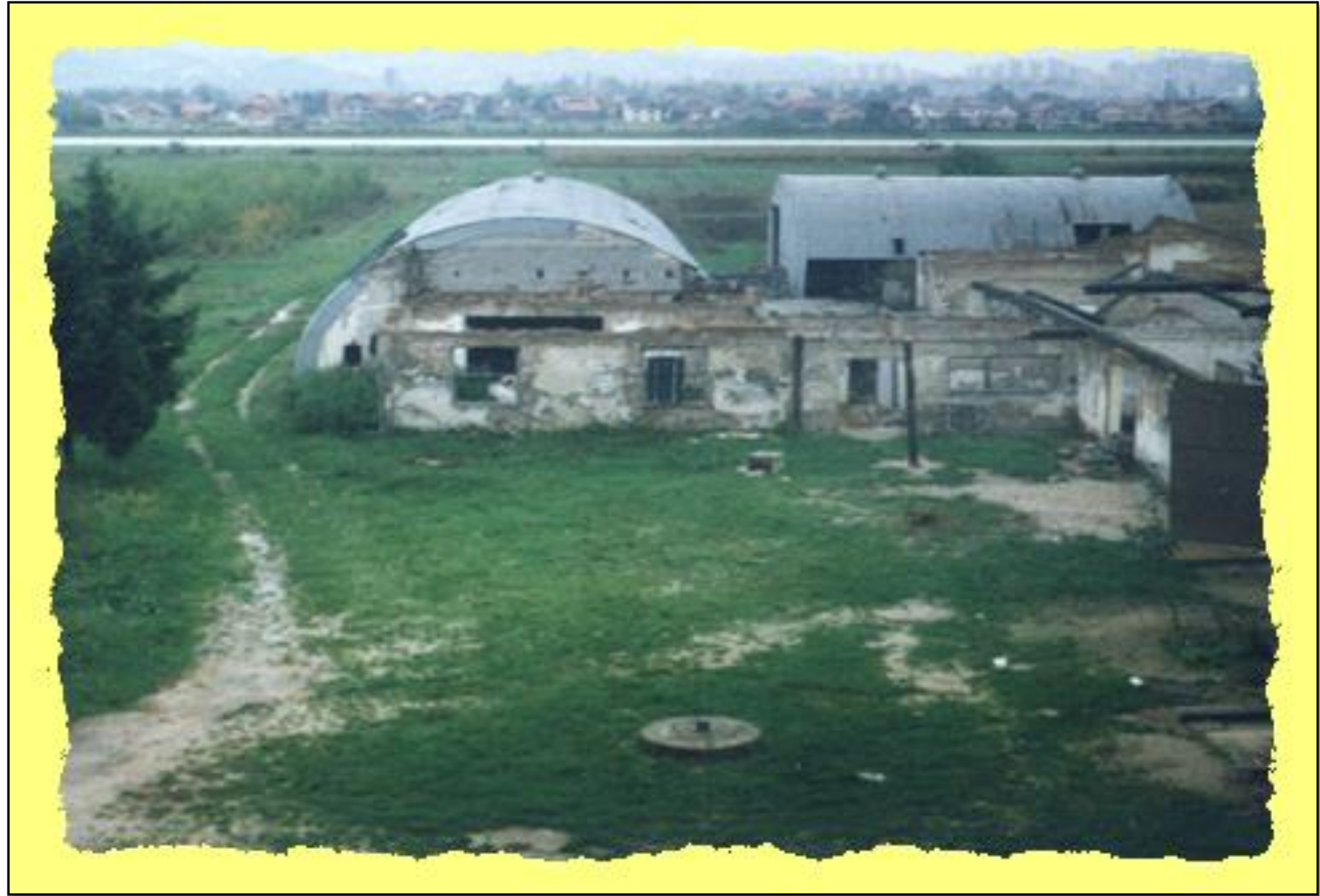
The short(est) history

- After The World War II – state owned cattle raising farm**
- In the 1950s – the land was granted to the Faculty, with its rights to register property**
- Gradual construction and equipping until the war in Bosnia and Herzegovina in 1990s when all its infrastructure, buildings and equipment were totally destroyed**

1996



1996



The short(est) history

- Post-war renovation started on mine fields
- The major contribution in the station renewal was generous donation of the **Slovenian government** in 2000

2001



The short(est) history

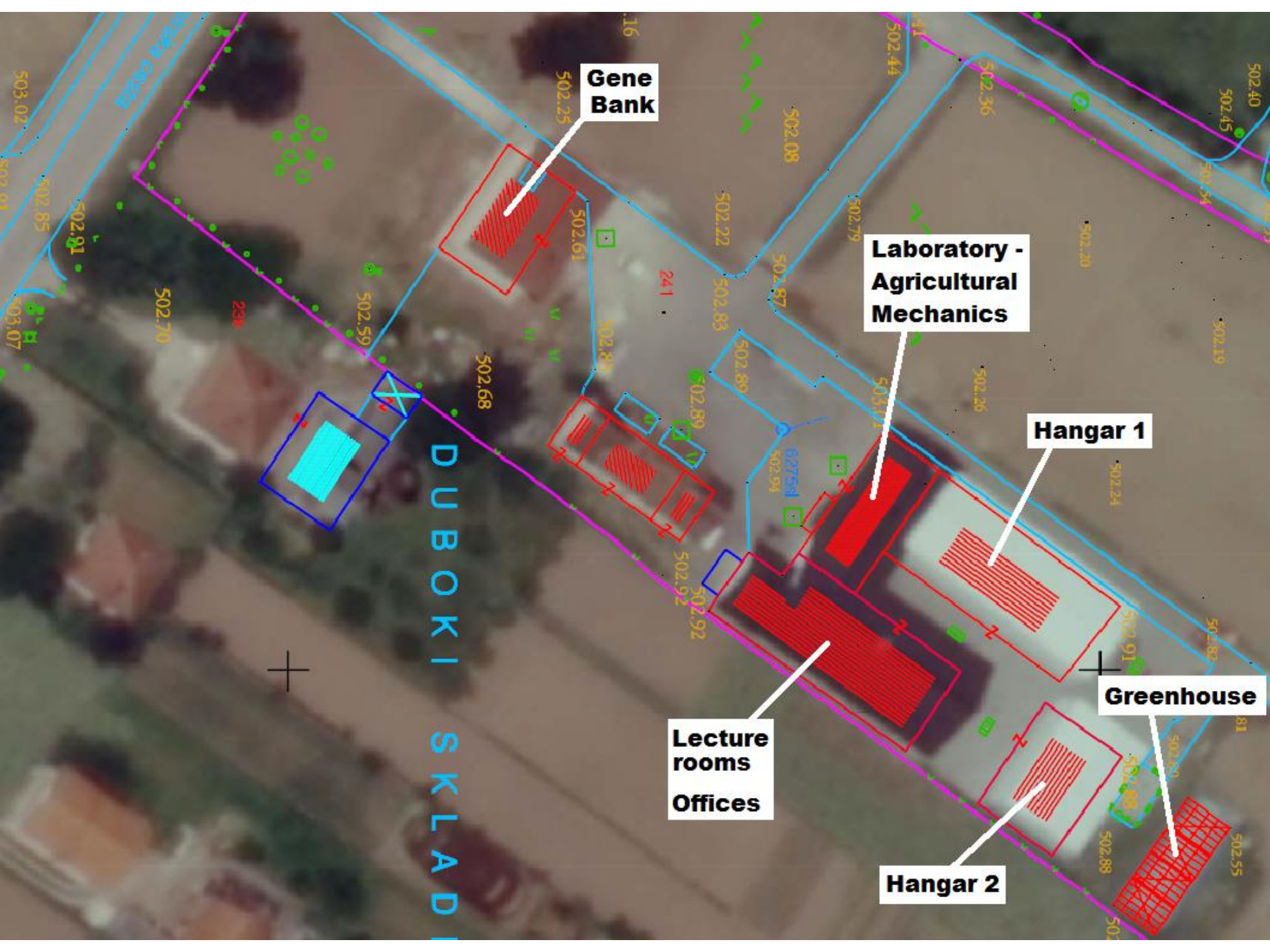
- **After that the Faculty has continued to build and equip the station, mainly with its own resources**

2017



The basic info

- **Arround 6.5 ha of land**
 - ca 1 ha – objects, roads, courtyard...
 - ca 2,2 ha – berry fruits intro center
 - ca 3,3 ha – land for various other purposes
- **Six main objects...**



Gene Bank

**Laboratory -
Agricultural
Mechanics**

Hangar 1

Greenhouse

**Lecture
rooms
Offices**

Hangar 2

DUBOKI SKLAD

Lecture room...



Lecture room...



Lecture room...



Laboratory for agricultural mechanics



Laboratory for agricultural mechanics



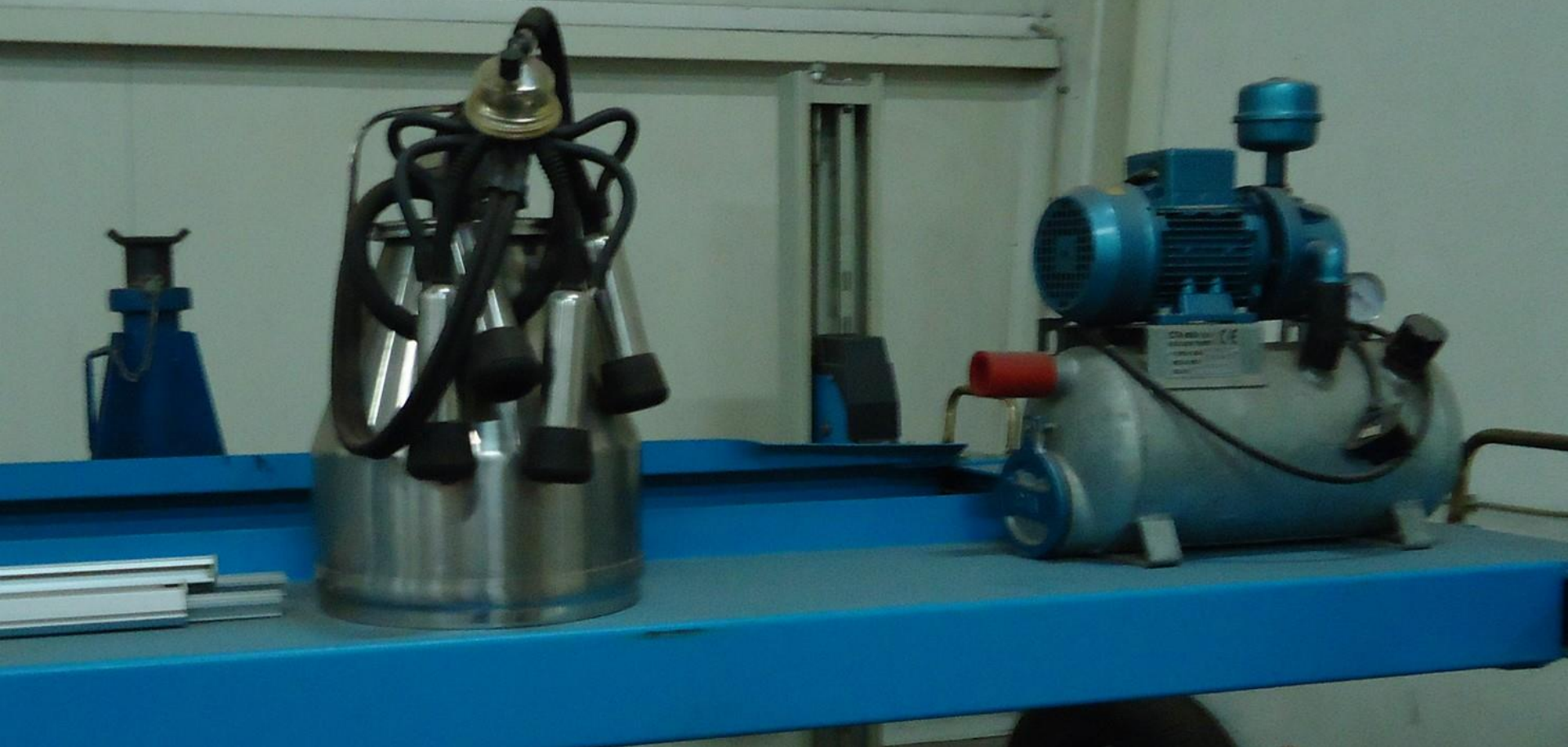
Laboratory for agricultural mechanics



Laboratory for agricultural mechanics



Laboratory for agricultural mechanics



Laboratory for agricultural mechanics



Laboratory for agricultural mechanics



Laboratory for agricultural mechanics



Laboratory for agricultural mechanics



Laboratory for agricultural mechanics



Laboratory for agricultural mechanics



Laboratory for agricultural mechanics



Laboratory for agricultural mechanics



Laboratory for agricultural mechanics



Laboratory for agricultural mechanics



Laboratory for agricultural mechanics



Laboratory for agricultural mechanics



Laboratory for agricultural mechanics



Laboratory for agricultural mechanics



Laboratory for agricultural mechanics



Laboratory for agricultural mechanics



Laboratory for agricultural mechanics



Laboratory for agricultural mechanics



Laboratory for agricultural mechanics



LAM – Diagnostics and control – Pesticide sprayers



LAM – Diagnostics and control – Dynamometer



LAM – Diagnostics and control – Traction



Hangar 2 – Machinery in regular use



UNIVERSAL

Traktor

moć motora 50 kW
4-benzinski motor
sigurnosna kabina
pripremljen komplet
instalacionih za koča
hidraulički priključak
i spojnicama za brzo
hidrostatički volan
+ ocene na sva četiri

Hangar 2 – Machinery in regular use



Hangar 2 – Machinery in regular use



Gene bank with laboratories



Gene bank with laboratories



Gene bank with laboratories



Gene bank with laboratories



Gene bank with laboratories



Gene bank with laboratories



Gene bank with laboratories



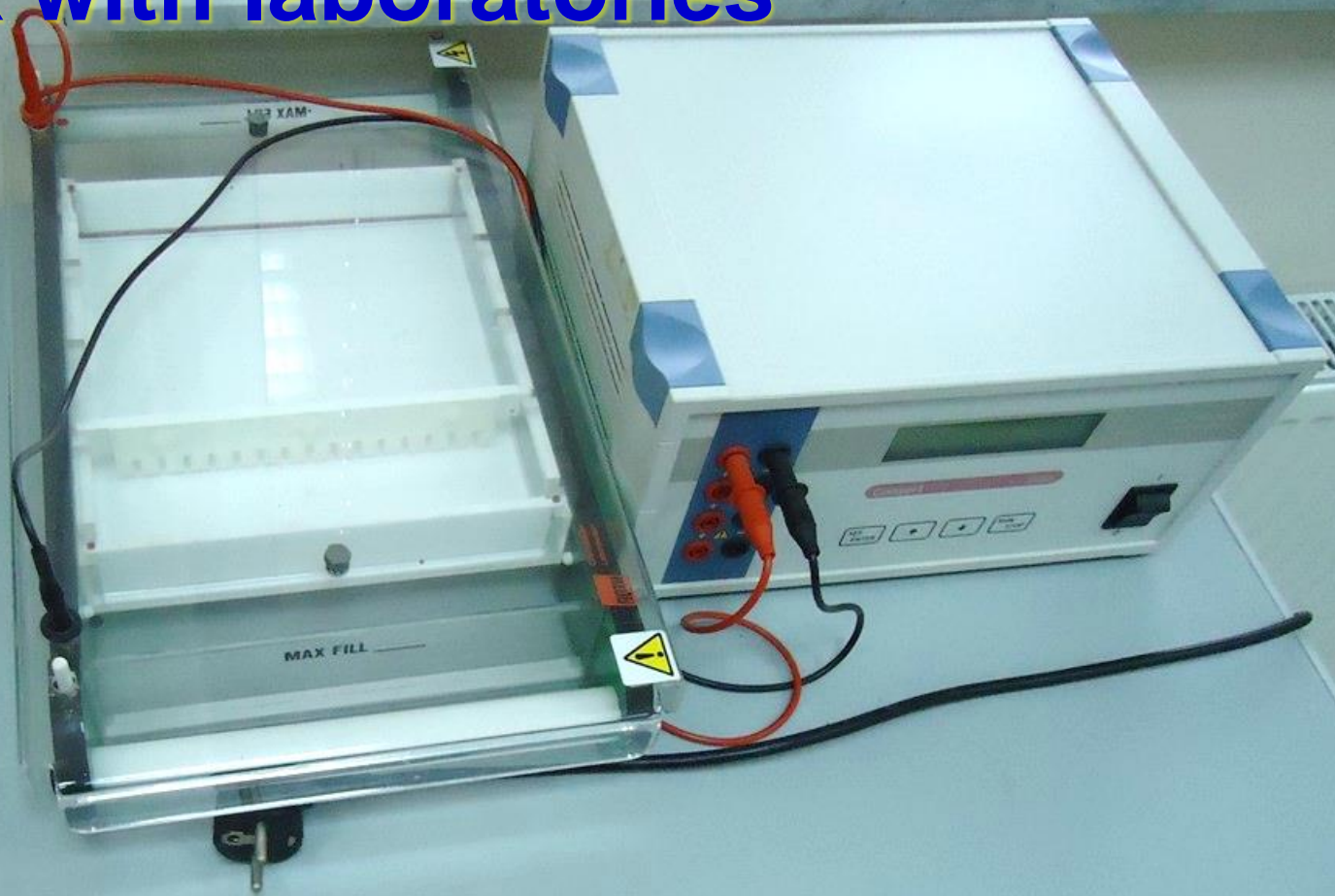
Gene bank with laboratories



Gene bank with laboratories



Gene bank with laboratories



Gene bank with laboratories

LFV 15



Gene bank with laboratories



Gene bank with laboratories



Gene bank with laboratories



Gene bank with laboratories



Gene bank with laboratories



Gene bank with laboratories



Gene bank with laboratories



Gene bank building – other premises



Gene bank building – other premises



Gene bank building – other premises



Gene bank building – other premises



Gene bank building – other premises



Greenhouses



Greenhouses



Greenhouses



Greenhouses



Greenhouses



Open fields...



Open fields...



Open fields...



Open fields...



Open fields...



Open fields...



Open fields...



Open fields...



Open fields...



Open fields...



Open fields...



OSMAK
(BOSANAC)

Open fields...



Open fields...



**CRVENA
PŠENICA**

Open fields...



Open fields...



Open fields...





Berry fruits – Intro center



Berry fruits – Intro center



Berry fruits – Intro center



Berry fruits – Intro center



Berry fruits – Intro center



Berry fruits – Intro center



Berry fruits – Intro center



Berry fruits – Intro center



Berry fruits – Intro center



Berry fruits – Intro center



Berry fruits – Intro center



Berry fruits – Intro center



Berry fruits – Intro center



Berry fruits – Intro center



Berry fruits – New production technologies



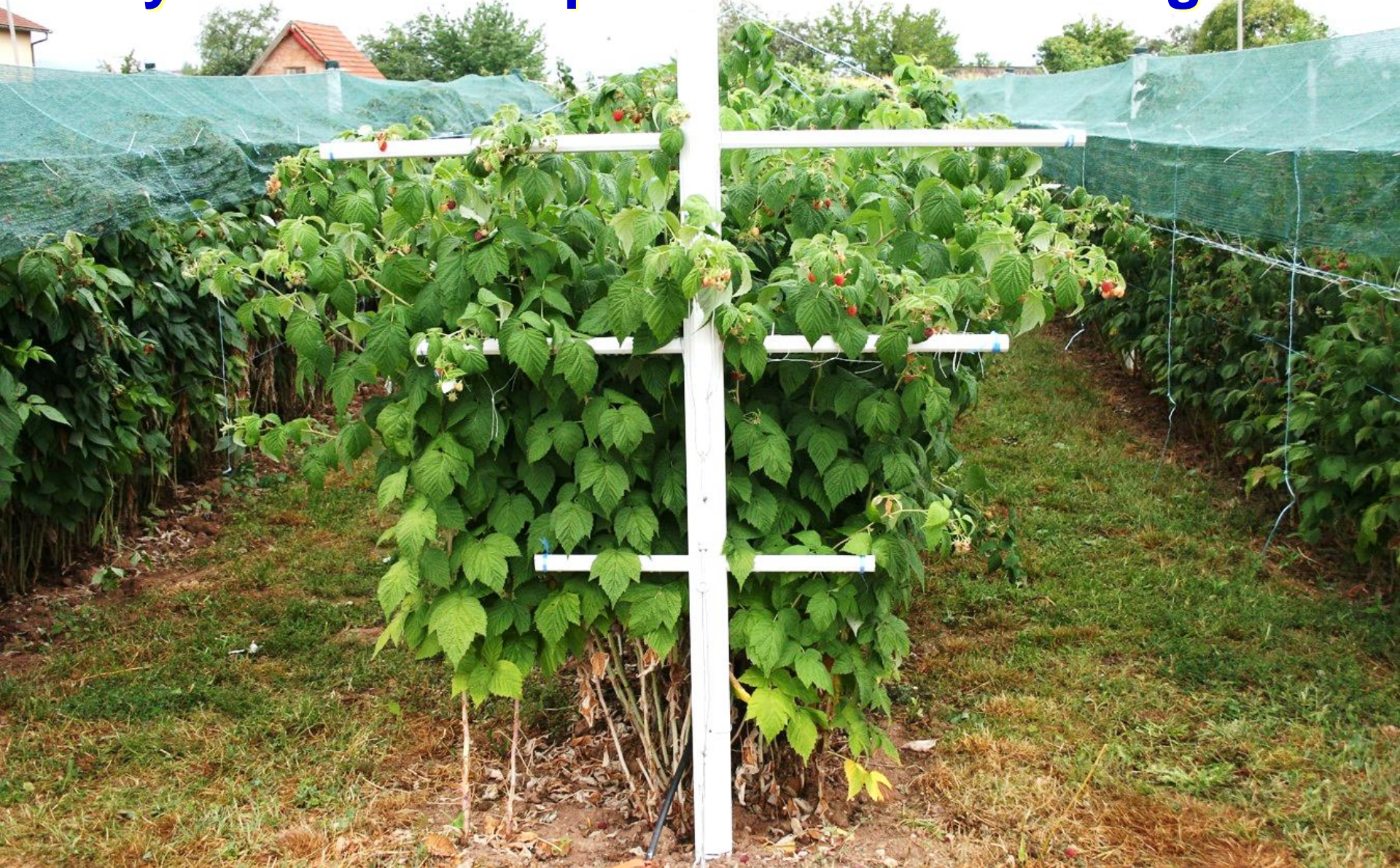
Berry fruits – New production technologies



Berry fruits – New production technologies



Berry fruits – New production technologies



Berry fruits – New production technologies



Berry fruits – New production technologies



Berry fruits – New production technologies

































